



ANZANIA PETROLEUM DEVELOPMENT CORPORATION



PETROLEUM EXPLORATION INVESTMENT OPPORTUNITIES IN TANZANIA (EAST AFRICA)

Mr. Lucas M. Luhaga (Geophysicist)

**The Geological Society, London, UK
February 25, 2019**





Presentation Outline

- **Introduction**
- **Tanzania Sedimentary Basins**
- **Exploration Opportunities**
- **Why Invest in Tanzania?**
- **Conclusion**



Introduction

❖ Tanzania Petroleum Development Corporation (TPDC)

- Established in 1969 under Presidential Decree
- Became operational in 1973
- 100% owned by the Government
- Administered under the Ministry of Energy

❖ **TPDC: Recognized as the NOC under the Petroleum Act (2015)**

- Undertake oil and gas activities throughout the entire value chain, on its own or in JV arrangements



Introduction...

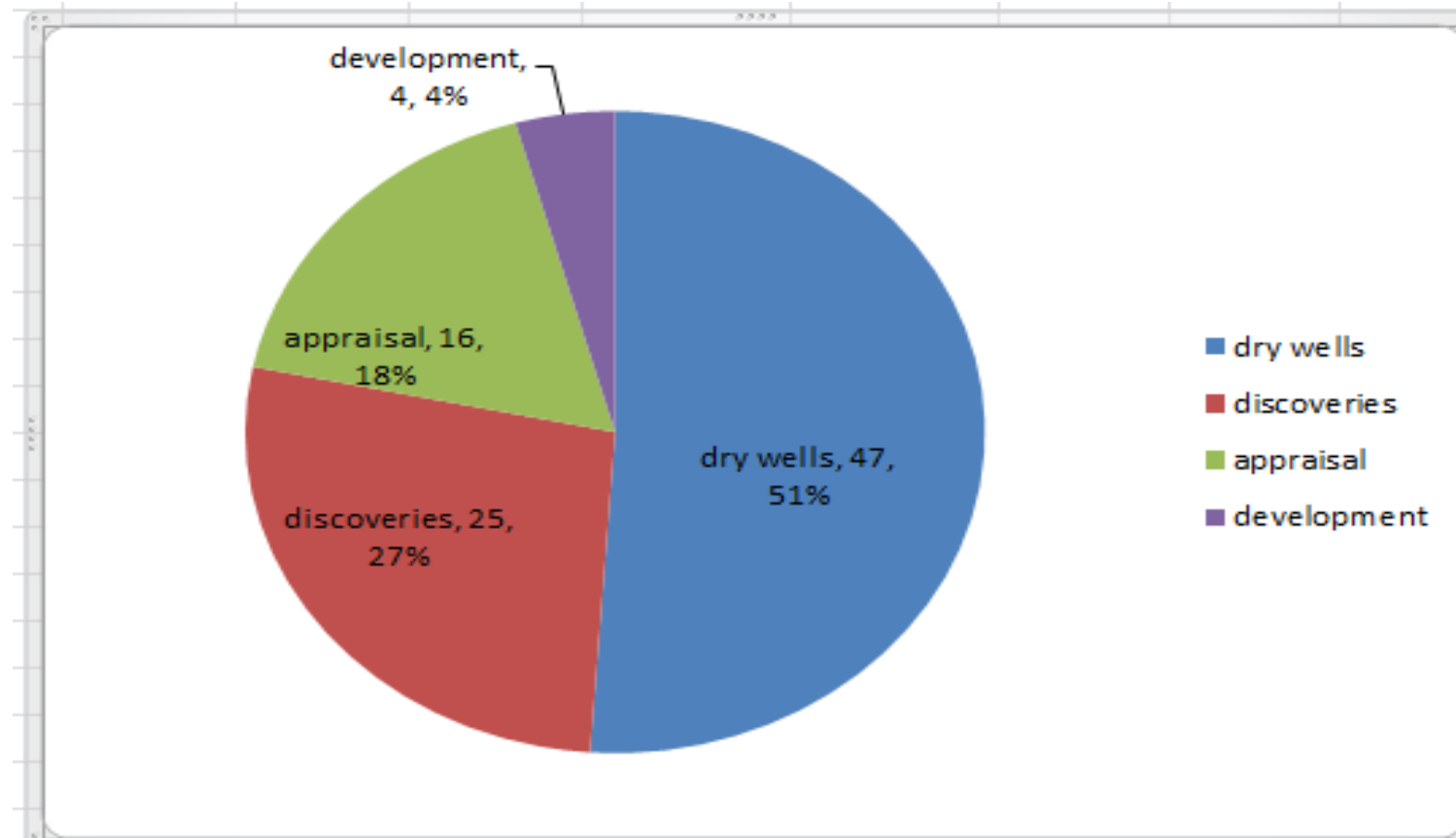
Exploration in Tanzania began in 1950s

Dry wells	Discoveries	Appraisal	Development	Total
49	25	16	4	94

Onshore	58
Offshore	36

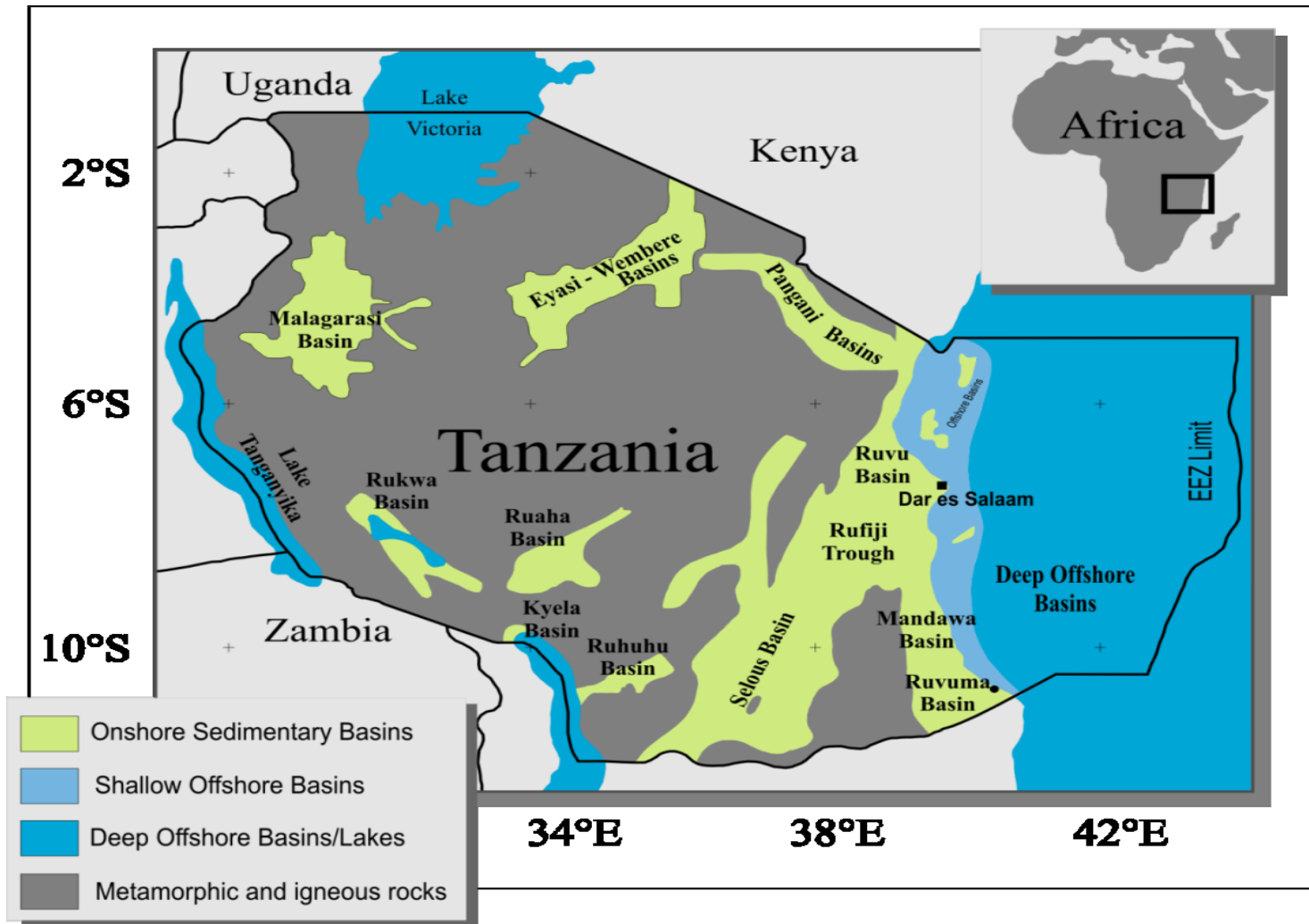
Total GIIP (currently): **57.54 TCF**

Chances of success is almost 50%





Tanzania Sedimentary Basins



Inland Rift Basins and
Modern Rift System:
114,000 km²

Coastal and Continental Shelf
Basins (onshore and offshore
including the islands of Zanzibar
Pemba and Mafia : **280,000km²**

Deep Sea Basins:
Basins (300m to 3000m of water
depths) **140,000km²**

Total: 534,000km²
56% of country size

Only 30% of the sedimentary basin
has been explored



Exploration Opportunities

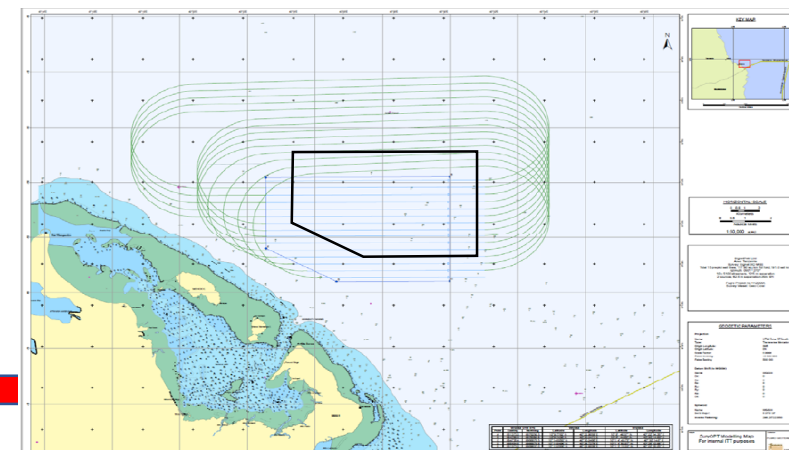
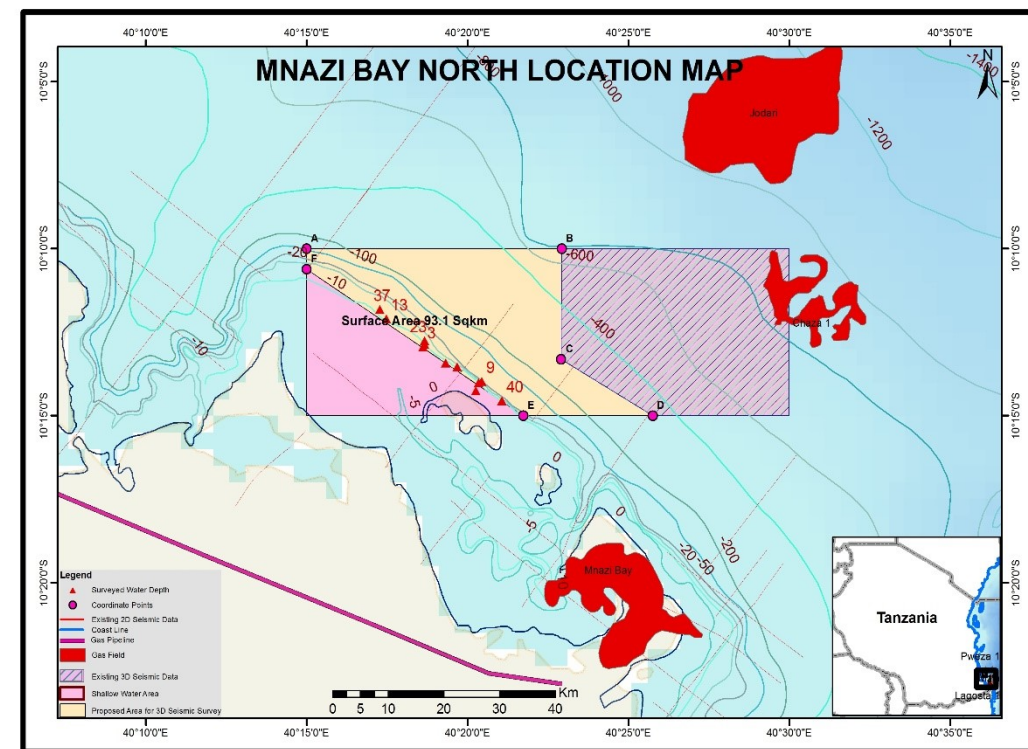
TPDC is recognized as the NOC and assigned to carry out HC explorations in the following Blocks:

- **Mnazi Bay North**
- **West Songo songo**
- **Block 4/1B & 4/1C**
- **Eyasi-Wembere – Frontier Block in the Eastern part of the EARS**



Mnazi Bay North Project

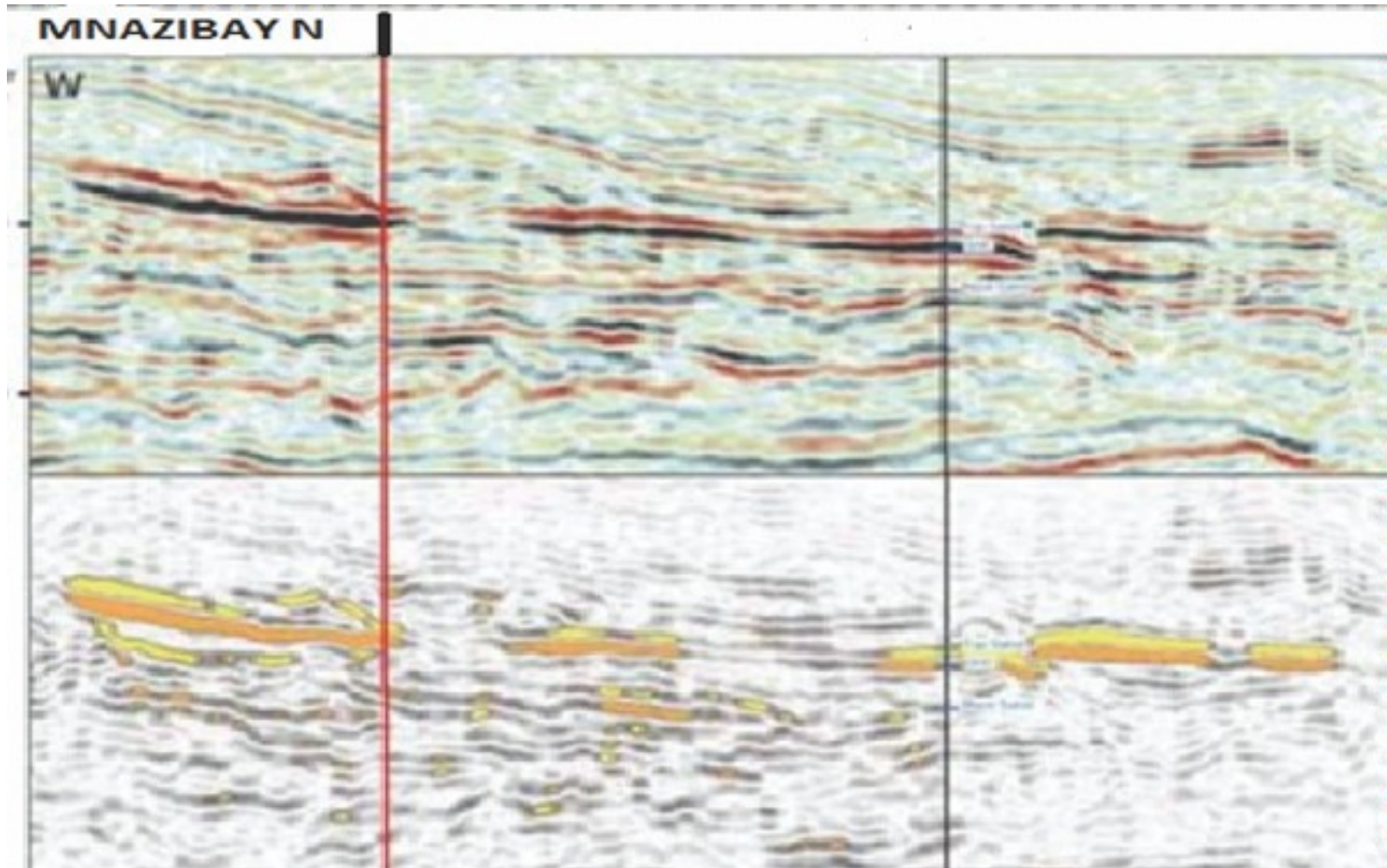
- The Block located offshore (< 1000m water depth)
- Area: 252.63 sq.km.
- Gas field & Gas pipeline
- Available data: 2D and 3D seismic (131 Sq.kms)
- Activities conducted in the Block:
 - Interpretation of 2D and 3D
 - Identify drillable prospects
- Current plan:
 - Acquisition, Processing and Interpretation of 3D seismic (93.1 Sq.kms)
 - Well drilling preparations and drilling consultancy
 - Strategic partner for project development





Mnazi Bay North Project

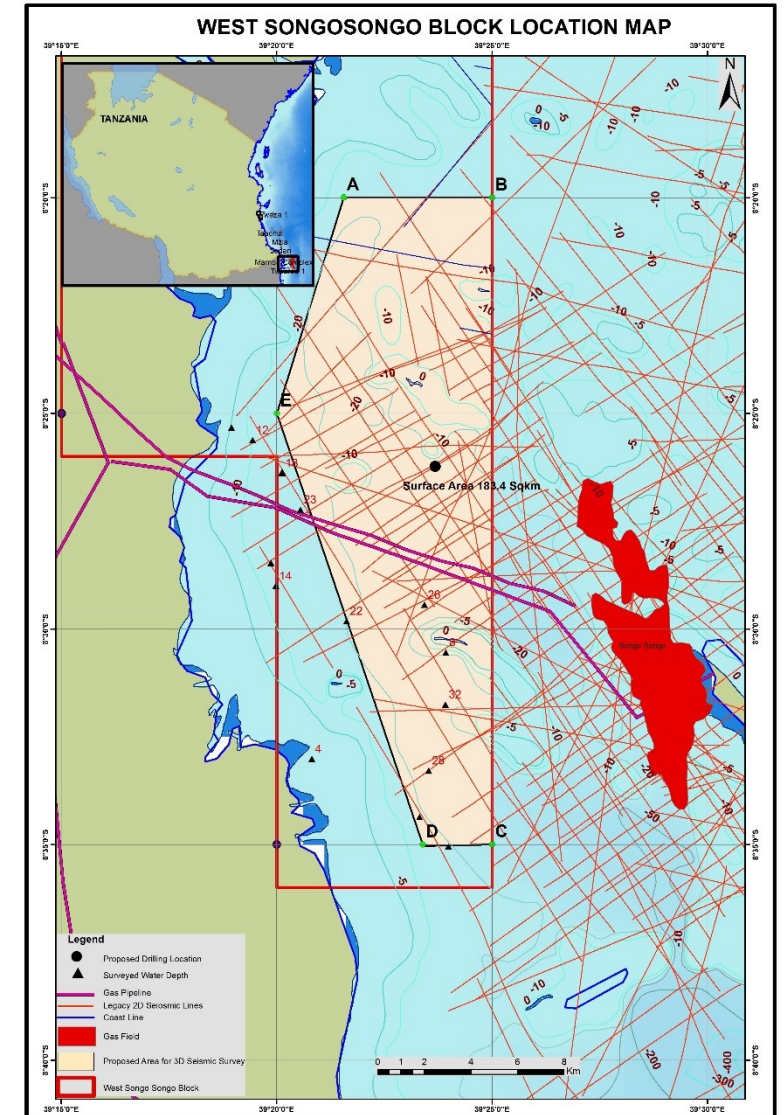
2D Seismic Interpretations





West Songo Songo Project

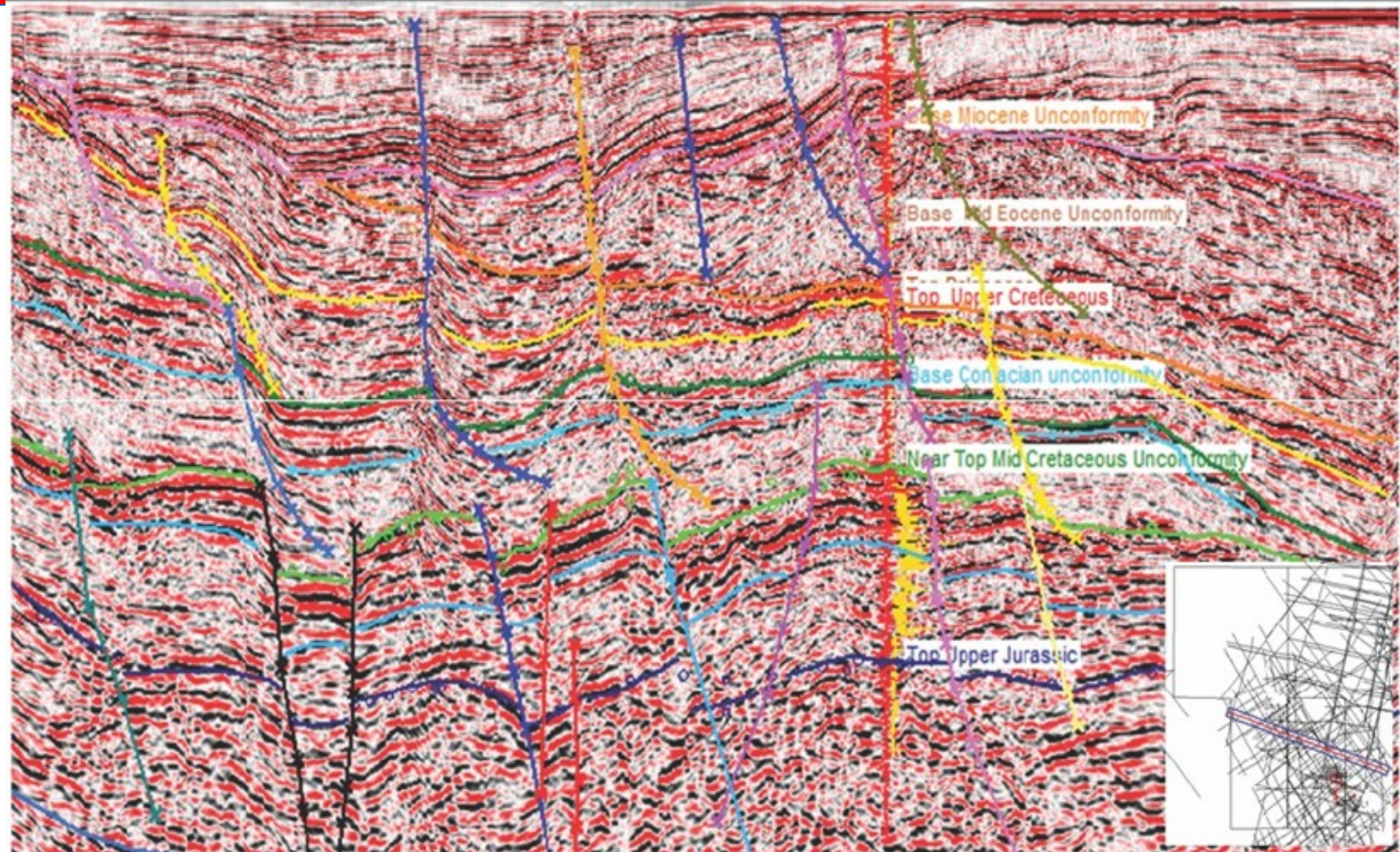
- The Block is located (< 100m water depth).
- The Block is at 10km from west of the SS gas producing field
- Area: 505.63 sq.km
- Gas Pipeline
- Work conducted
- Available data: AGG and 2D seismic
- Current plan
 - Acquire, process and interpret 3D(183.4 Sq.kms) in the identified prospects
 - Strategic partner for drilling and future work





2D Seismic Interpretation WSS

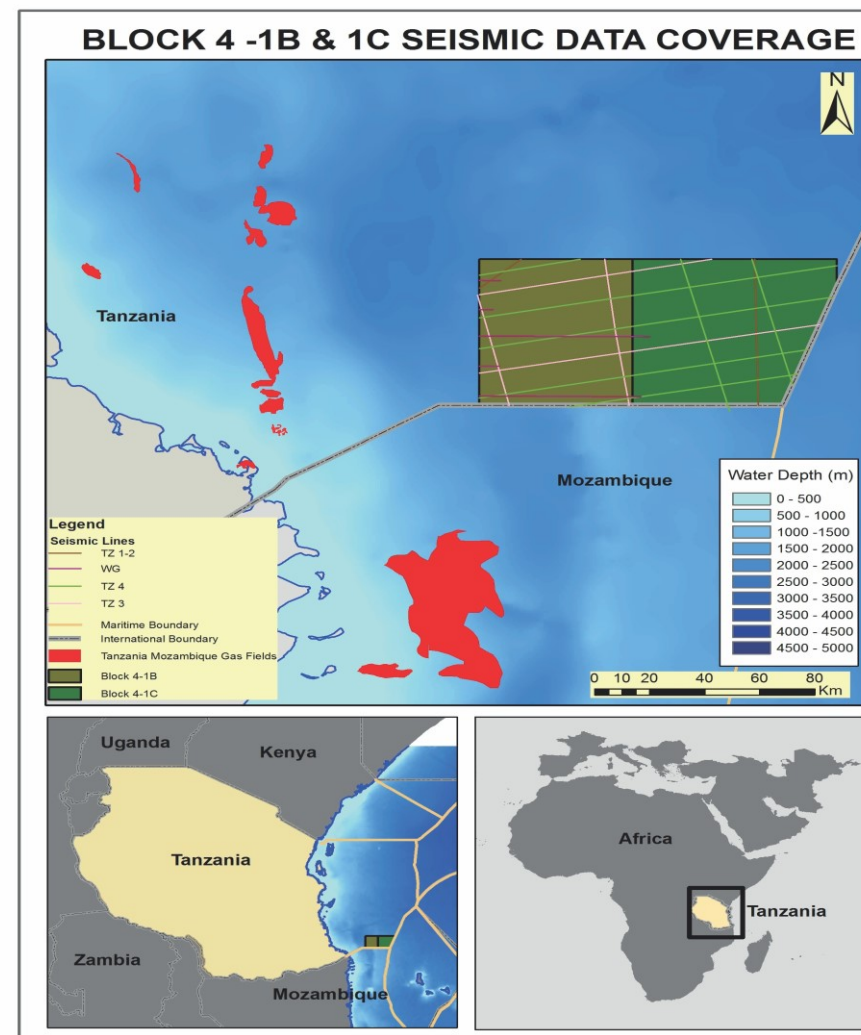
- Interpretations of existing 2D seismic data



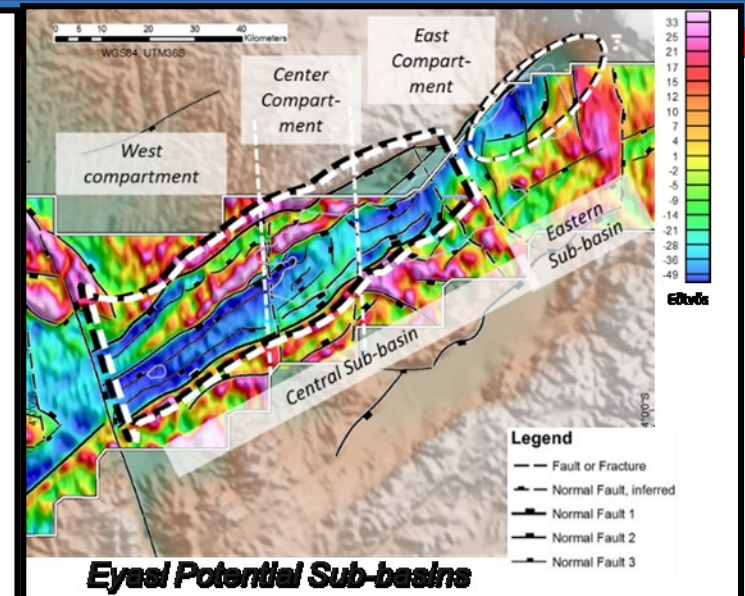
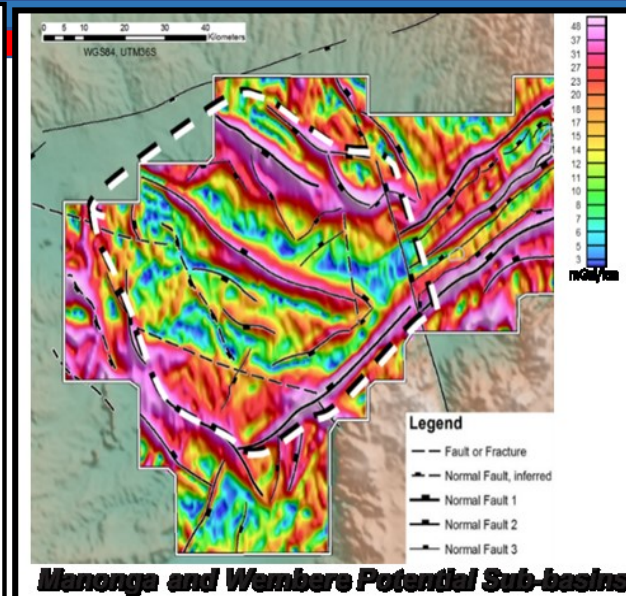
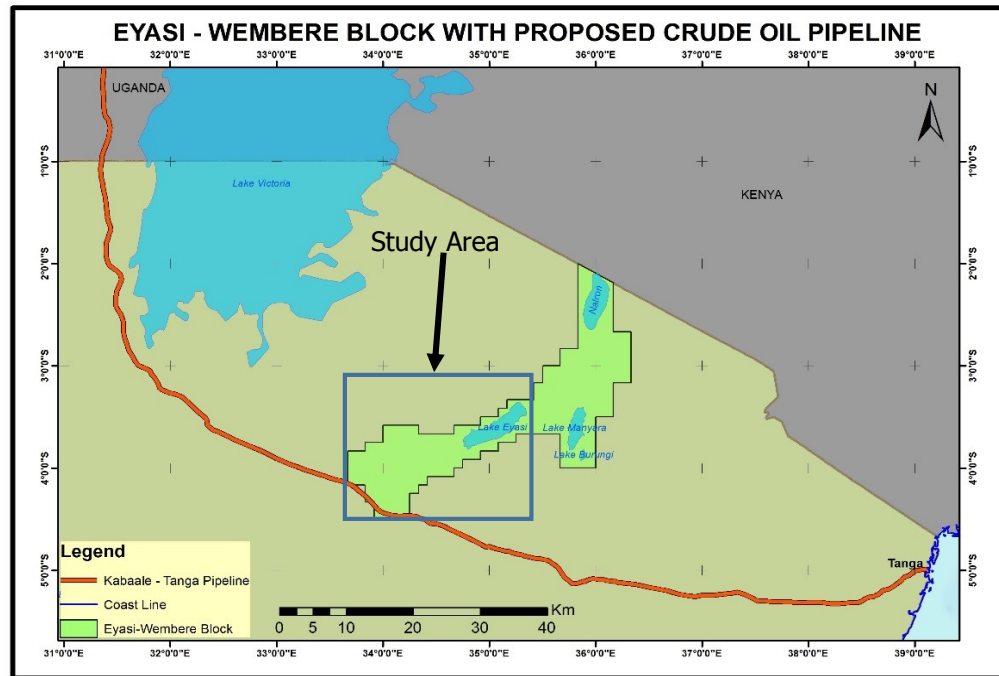


Blocks 4/1B and 4/1C Project

- The Block is located Offshore Southern Tanzania (Deep-Water >1500m) with surface area covering 3586.9 sq.km
- Block-1 Gas discovery operated by Shell/BG
- Available data: 2D seismic
- Current plan:
 - Acquire, process and interpret 3D seismic data (600 Sq.km)
 - Identify drillable prospects
 - Sourcing a strategic partner for drilling and future work



Eyasi- Wembere Project



Current plan:

- Detailed geological, geophysical and geochemical studies
- Drill of stratigraphic boreholes
- Plan 2D seismic
- Sourcing of strategic partner for drilling and future work



Why Invest in Tanzania?

- Attractive geology
- Attractive fiscal terms (PA, 2015 & Expected JVC)
- Stable Petroleum Regulatory Regime (PA, 2015)
- Peace and Security
- NOC (TPDC) to secure all permit/License and other matters related to petroleum operations from the Host Government



Conclusion

- TPDC is seeking to partner with a body/Entity/ corporate registered under the Companies Act or any other written law with the following attributes;
- Recognized capacity;
 - Technical knowledge; and
 - Financial capability



**For more info.,
please visit:
www.tpdc.co.tz**



THANK YOU !